

orbitsound[®] T12

Soundbar and iPod dock with airSOUND[®]



BELIEVE YOUR EARS

User's guide

Contents

Welcome	2
Package contents	2
The soundbar	3
Remote control	3
Setting up the T12	5
1. Connect subwoofer	5
2. Connect power	6
3. Connect a sound source	6
Basic operation	7
1. Power on	7
2. Source selection	7
3. Volume / Mute	8
4. airSOUND soundfield	8
5. Tone adjustment	8
Advanced Setup	9
1. Positioning: getting the most from airSOUND	9
2. Subwoofer placement:	9
3. airSOUND adjustment	10
Connection to TV	10
Enhancement to TV sound (replacing TV speakers)	10
iPod control & charge	11
Charge / Menu	11
Maintenance	12
Cleaning and care	12
Battery replacement (remote)	12
Troubleshooting	13
No sound is heard	13
Remote does not work	13
Sound is distorted	13
Sound is noisy / 'hissy'	13
Orbitsound Warranty	14
Warranty Terms	14
Making a Warranty Claim	14
Orbitsound Ltd Warranty Terms and Conditions	15
Specifications	17

Welcome

Thank you for purchasing the orbitsound T12 stereo soundbar with airSOUND®. With proper use the orbitsound T12 delivers superb sound fidelity and stereo sound field and will provide you with a high quality listening experience.

This instruction booklet covers important safety and setup information as well as advice on how to get the most out of your orbitsound T12.

Contact information:

ORBITSOUND LTD.
The Sound House, Hunsdon Road, Torquay.
TQ1 1QB. UK

UK Office Tel: +44 (0)8456 521 219
UK Support Tel: 0845 539 0078

International Support: see website below.

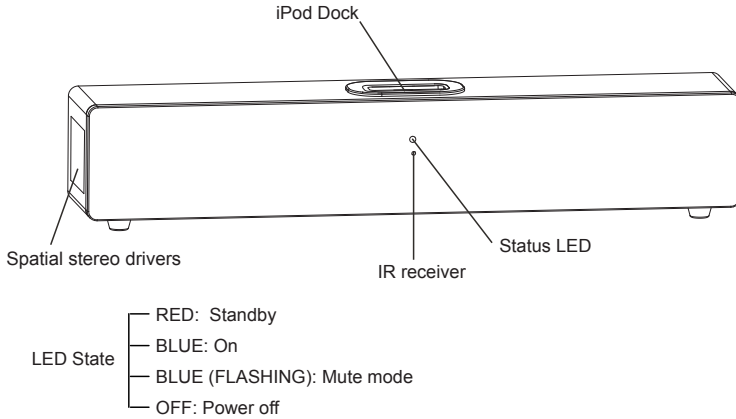
Web: www.orbitsound.com
Email: info@orbitsound.com

Package contents

Inside the T12 packaging you will find:

- Head unit (soundbar) with iPod® dock
- Subwoofer
- Remote control
- Power supply
- Subwoofer speaker cable
- Mains cable
- Handbook
- Audio connection cables
- iPod® dock adaptors

The soundbar

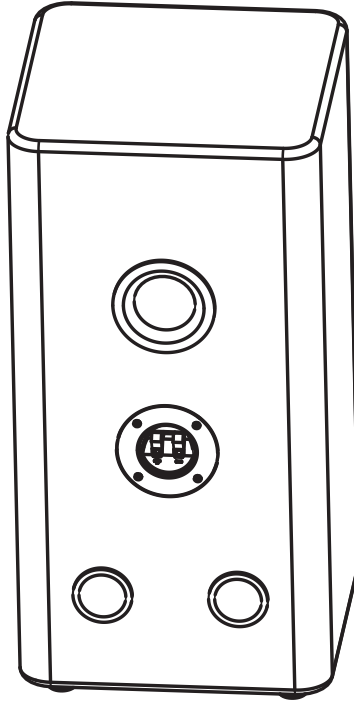


The T12 soundbar produces most of the sound that you hear. It produces the main signal and stereo information. It also houses the amplifiers for itself and the subwoofer.

Remote control

The T12 remote control provides volume control, tone control and sound source selection, and additionally play/menu controls when using an iPod connected to the iPod dock on the soundbar.

The subwoofer



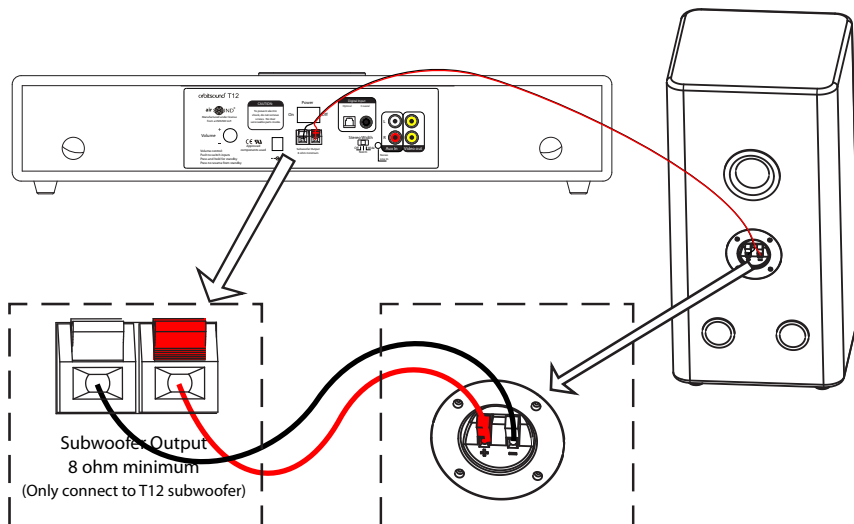
The subwoofer is a passive loudspeaker designed to produce powerful sound at bass frequencies.

IMPORTANT: When supplied, the subwoofer may be encased in plastic that covers the ports. This plastic must be removed to allow the subwoofer to operate properly.

Setting up the T12

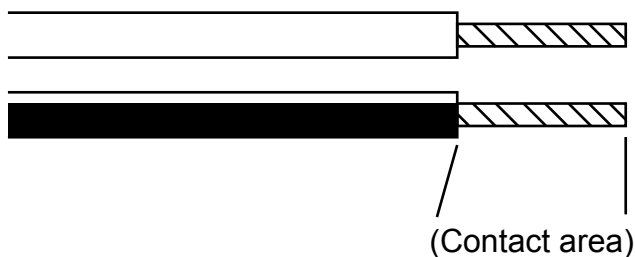
1. Connect subwoofer

Connect the subwoofer to the subwoofer output on the stereo soundbar as shown:

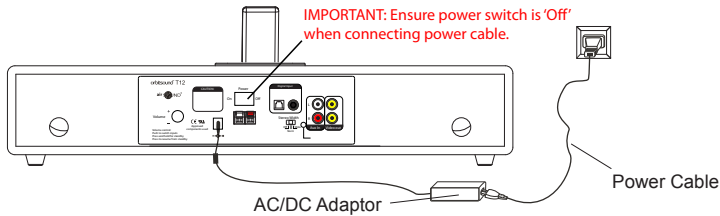


Note: The speaker wire is colour marked to make the job of identifying the correct wire for speaker terminal easy. Connect the black striped wire to the black terminal at both ends, and the red wire to the red terminals.

IMPORTANT: Make certain that the metal core of the wires only is inserted into the wire socket to ensure metal-metal contact. The contact area is shown below:



2. Connect power

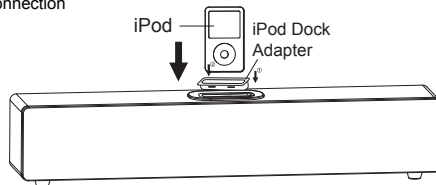


Connect the power supply as shown.

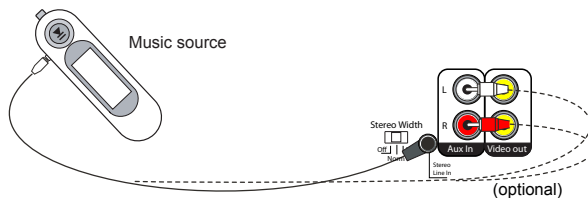
3. Connect a sound source

You can connect multiple sources to the T12 and listen to either:

A) iPod connection



B) AUX connection (rear of sound bar)



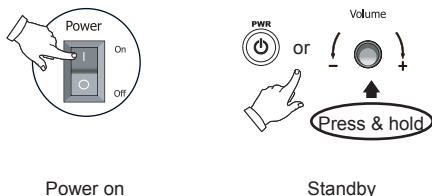
IMPORTANT: (A) It is strongly advised that the iPod connection is used with the correct iPod adaptor for your iPod model as supplied separately by Apple inc. Use without an adaptor or incorrect type may cause damage to your iPod and/or T12.

NOTE: (B) You can connect your sound source to either the 3.5mm line input OR dual RCA (phono) AUX IN connectors OR the digital coax (RCA) OR optical (TOSLINK) inputs. Use which ever is most convenient.

HINT: You can use the 'headphones' output from most televisions connected to the 'line in' in order to use the T12 to replace the sound from your TV. Then, the volume control on the TV will continue to function and control the level of sound from the T12.

Basic operation

1. Power on

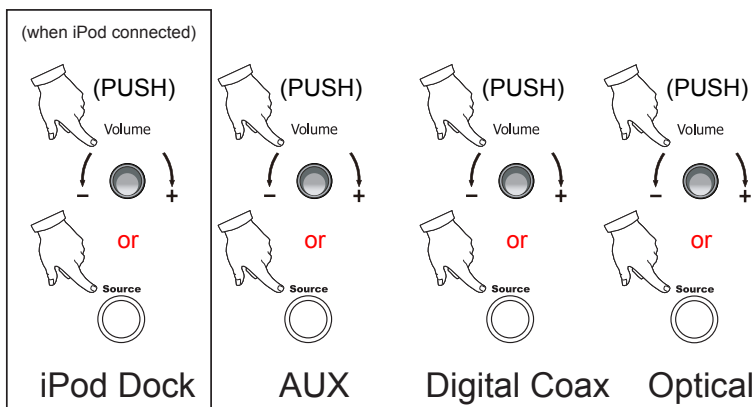


IMPORTANT: The main power switch must be on for T12 operation. This is located on the rear of the soundbar unit.

Standby / On: The T12 may be put into 'standby' or switched on by pressing the PWR button on the remote. Briefly pressing the volume control on the rear of the soundbar also switches on the unit. Pressing and holding the volume button for 2 seconds will enable standby mode.

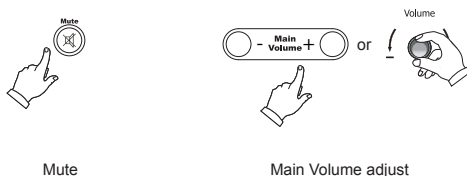
NOTE: The colour of the LED on the front of the T12 shows the current status of the unit. Red means the unit is in standby mode. Solid blue indicates that the unit is on.

2. Source selection



Source select: Press the 'Source' button on the remote (or briefly press the volume knob on the unit's rear) to switch the sound source from iPod dock to Line/AUX inputs to Digital Coax to Digital optical. The iPod selection is skipped if no iPod is present (i.e. only 3 inputs when no iPod is in use).

3. Volume / Mute

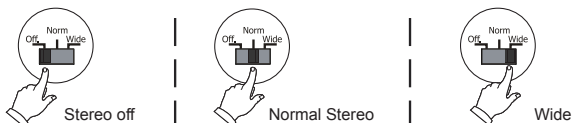


Mute: Press the mute button on the remote to silence or resume play through the T12.

NOTE: When the T12 is on and mute is enabled, you will see a blue flashing light on the front of the soundbar. A continuous blue light indicates that the T12 is on.

Volume: Volume may be adjusted from the + and - buttons on the remote, or by turning the volume control on the rear of the unit.

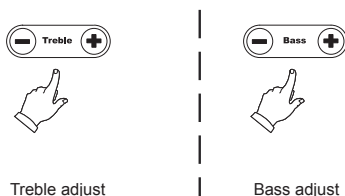
4. airSOUND soundfield



The stereo sound field may be adjusted via the stereo switch on the rear panel.

HINT: For most listening environments, leave this switch on 'Wide'.

5. Tone adjustment



The sound tone may be adjusted with the remote control.

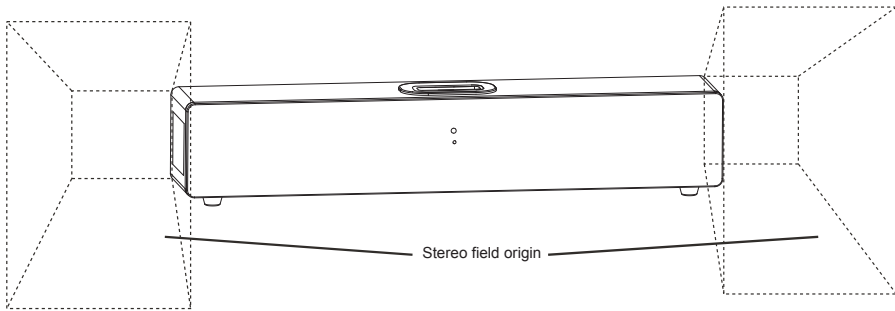
Note: the blue indicator light on the front of the sound bar will flash as the tone is adjusted. It will stop flashing when the minimum or maximum bass or treble adjustment is reached.

Advanced Setup

The orbitsound T12 is easy to set up and enjoy, but even better sound can be achieved by following these guidelines.

1. Positioning: getting the most from airSOUND

The stereo sound field is produced by the speakers mounted in the side of the soundbar. These stereo signals interact with the main signal to produce true stereo in your listening environment:



IMPORTANT: The areas marked need to be clear of obstacles in order for the airSOUND stereo sound field to work effectively.

HINT: Because airSOUND produces a uniform stereo sound field, the soundbar does not need to be placed directly in front of the listener. Therefore, placing the soundbar conveniently so that the sides are not obstructed is more important than central placement, i.e. on low or high shelf, countertop, below/above TV

2. Subwoofer placement:

Subwoofer placement is not as critical as the placement of the soundbar. Position the subwoofer after optimising placement of the soundbar.

HINT: The sound output from the subwoofer is omni directional, so this can be placed anywhere. However, try to avoid placing the subwoofer too far from the soundbar as this can cause a noticeable 'separation' effect.

IMPORTANT: Always make sure that the subwoofer's side with ports (tubes) is clear from obstruction.

3. airSOUND adjustment

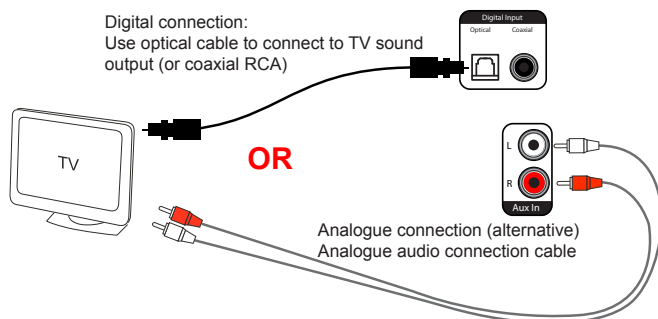
airSOUND does not use digital processing or modify the original sound; The stereo width selection switch on the rear of the unit simply changes the volume of the side facing stereo speakers that deliver the airSOUND signal. Once the T12 is set up for the best listening in your environment, choose the stereo width setting (stereo switch on rear panel) that sounds the best.

IMPORTANT: The stereo switch does not alter the tone of the sound reproduction; choose the setting that suits your listening preference best.

HINT: In rooms that are large, or if there are unavoidable obstructions near the side facing speakers, 'Wide' is usually the best setting. You do not need to worry that the sound is being 'altered' by a high setting as airSOUND does not work like this.

Connection to TV

This configuration can be used for TVs with optical/coaxial digital outputs or RCA (phono) audio outputs. The TV outputs stereo sound directly to the T12.

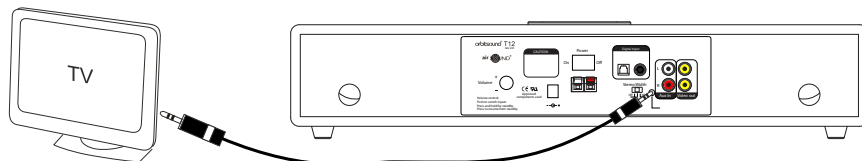


HINT: When using the T12 in this way, it is normal that the sound output on the TV will need to be turned down or muted to stop sound coming from the TV's own speakers. It will improve the overall listening experience if you do this.

HINT: You can also use the coax or optical (TOSLINK) digital inputs on the T12 with other devices such as satellite units and DVD players that have an appropriate digital output.

IMPORTANT: Remember to remove the protective plastic covers from a new TOSLINK cable before connecting to the optical port on the T12 or your TV. Failure to remove these covers may result in damage and will interrupt the sound output.

Enhancement to TV sound (replacing TV speakers)



Connect headphones out on TV to 3.5mm input on T12 (alternative connection)

HINT: When used in this way, the TV remote control should adjust the volume into the T12, but the iPod dock volume will be different to the TV listening level (some TVs have a menu option to mute internal speakers or alter the headphone out behaviour).

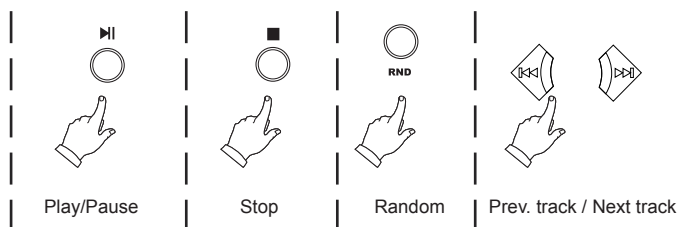
IMPORTANT: Make sure that the T12 is initially turned down when connecting to a TV. Once the T12 is connected, raise the TV volume to about half, then adjust the T12 volume to a comfortable listening level.

Video output

The T12 features 2x RCA composite video outputs. These will display video content from your iPod/iPhone when it is played. There is no on screen menu, the video output is a monitor for video content only.

iPod control & charge

Basic play control is achieved by pressing the following buttons on the T12 remote control unit:

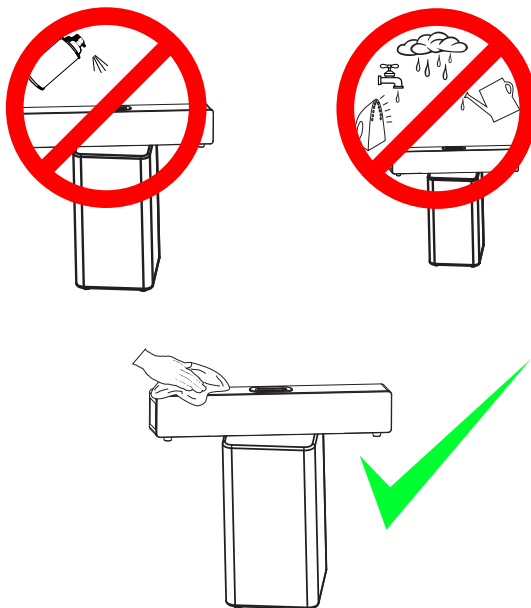


Charge / Menu

The iPod is charged when it needs charge and when connected. Also, the menus may conveniently be navigated from the remote for most iPod models. Pressing the 'iMenu' button enters the iPod menu. Use the remote navigation functions to control your iPod.

Maintenance

Cleaning and care

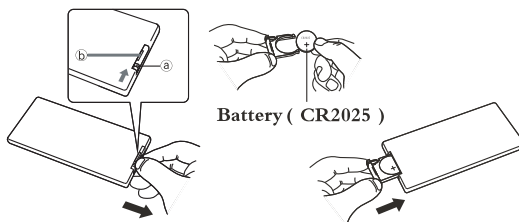


Use a soft, clean cloth moistened with plain, luke-warm water to clean the exterior of the unit.

IMPORTANT: Never use solvents such as benzene or other strong chemical cleaners since these could damage the unit's finish. It is important that no liquid reaches the inside of the unit.

Battery replacement (remote)

Replace remote battery with anode up (+) from back-side.



Troubleshooting

No sound is heard

- Check power connections and that there is a continuous blue light on the front of the unit.
- Check that the iPod/TV or other sound source is playing and that it is connected properly to the T12. With iPod, check that the unit is docked fully. If unsure that your media device is playing, unplug, and test with headphones.
- Press the sound source button on the remote (or briefly press volume knob on rear of soundbar) to change the sound source.
- Adjust the volume of the T12 until sound is heard and press source button again if there is still no sound.

Remote does not work

- Check that plastic strip in remote has been removed (this engages the battery)
- If the remote has had a lot of use, replace the battery.
- Check there are no obstructions between the remote and the front of the T12 soundbar.

Sound is distorted

- Turn down the output of the device playing into the T12
- Turn up the master volume on the T12 if necessary.
- Check that all audio connections are well seated / plugged in fully.

Sound is noisy / 'hissy'

- Turn down the volume of the T12 unit
- Turn up the output volume of music source to compensate.
- Use the digital coax or optical (TOSLINK) inputs if possible.

Orbitsound Warranty

This Orbitsound product is supplied with a 12 month limited manufacturer's warranty dated from new purchase date. This warranty covers repairs or replacement that may be required in the event of unit failure during normal use, subject to the terms and conditions stated below and at the Agent's discretion. This warranty is non transferable and excludes any routine maintenance, consumables or parts, or any work arising from use of the equipment outside the recommendations in the handbook, misuse or negligence.

Warranty Terms

'Agent' means orbitsound Ltd. or an orbitsound representative appointed for the purposes of fulfilling the manufacturer's warranty.

'Purchaser' means the company, firm or person using the product for the warranty period.

'Product' means the good sold to the Purchaser under contract.

Making a Warranty Claim

In the event that the unit stops working or performing as described in the handbook, the following procedure must be followed in order to have the unit restored or replaced by this warranty:

1. Contact your Orbitsound support agent FIRST.
2. If the support agent advises to do so, return the unit in its original packaging complete with PROOF OF PURCHASE to the address advised.
3. You will be advised by the Agent on the action that will be taken and any costs payable, subject to the conditions of this warranty.

Orbitsound Ltd Warranty Terms and Conditions

1.RETURN TO BASE WARRANTY

Faulty products will be repaired or replaced (as deemed appropriate by the relevant Agent) at the Agent's premises.

2. LIMITATIONS

The warranty covers the product and any agent installed accessories provided that the equipment has been installed and used in accordance with the supplied handbook instructions. The warranty will not cover repairs or replacements arising from misuse or accidental damage. See Warranties and Liabilities.

3. CHARGES

For warranty repairs that are 100% covered by the manufacturer's warranty, there will be no charge for any repair or replacement or return freight to the purchaser. Any repairs or replacements that are found to be outside the scope of this manufacturer's warranty are chargeable, and the return freight will be charged at the Agent's discretion. Associated charges must be paid in full before the returned item(s) will be dispatched to the Purchaser.

4. WARRANTIES AND LIABILITIES

- a. Subject to the provisions below the supplier warrants that the product will perform in a manner fit for purpose.
- b. The Agent shall be under no liability in respect of any defect in the product arising from any action whatsoever by the Purchaser except such action as is described and recommended in the handbook supplied.
- c. The Agent shall accept no liability for any defect arising from excessive wear and tear, willful or accidental damage, abuse, negligence, abnormal operating or storage conditions or failure to follow the operating
- d. Unauthorised modification or repair by unauthorised person(s) voids this warranty immediately.
- e. The Agent shall be under no liability under this warranty if the total agreed price for the product has not been paid in full.
- f. The liability of the Agent shall not exceed the price paid for the product and the Agent shall not be liable for any loss of profit or consequential damage or any

other claim for compensation.

- g. This warranty does not affect any statutory consumer rights that may exist where the Product was purchased.

5. FORCE MAJEURE

The Agent shall have no liability for delay or failure to perform if such failure is due directly or indirectly to any cause beyond the Agent's reasonable control including but without limitation to acts of God, explosion, fire, terrorism, accident, war or threats of war, prohibitions of any kind, embargoes, strikes or lockouts.

GENERAL

The Agent may assign or subcontract responsibilities and rights under this warranty. In all warranty cases, please refer to the support pages of www.orbitsound.com first.

ORBITSOUND LTD.
TQ1 1QB
UK

Tel UK office: +44 (0)8456 521 219

Web www.orbitsound.com
Email info@orbitsound.com

For email support: support@orbitsound.com

All trademarks, marks and registrations are the property of their respective owners.

Specifications

Frequency range +/- 3 dB [Hz]	40 – 16KHz
Control; response (remote control)	+, -6dB at 60Hz and 8KHz
Spatial level (slide switch)	Off, normal, wide
Maximum SPL [dB]	92dBA
Amp. power [Watts at 0.1% dist.]	40 + 20 + 20 RMS
Crossover frequencies [Hz]	160/5,000
Tweeter drivers	2 x 1" m/c
Midrange drivers	4 x 2.5"
Spatial drivers	2 x 2" full-range
Enclosure type	Reflex/airSOUND
Sub-Bass driver	1 x 6"
Sub-Bass Enclosure type	Tuned reflex
Connection input(s)	Stereo Line level -10dBu 3.5mm jack and RCA. coax & optical digital inputs on RCA phono and TOSLINK. iPod (input and charging)
Connection output(s)	RCA composite video x2
Recommended placement	Main, in front of television Sub, floor
Dimensions (H x W x D) [mm]	100 x 605 x 110 (main) 460 x 230 x 230 (sub)
Cabinet finish	High gloss Chinese lacquer
Weight (in packaging)	13Kg / 28lb
Power consumption Standby / Idle	2.37W / 5.63W
Power charging iPod/iPhone	7.7W / 12W
Voltage / Power	22V DC
Remote Control IR lead code	08F7